



PBH Series

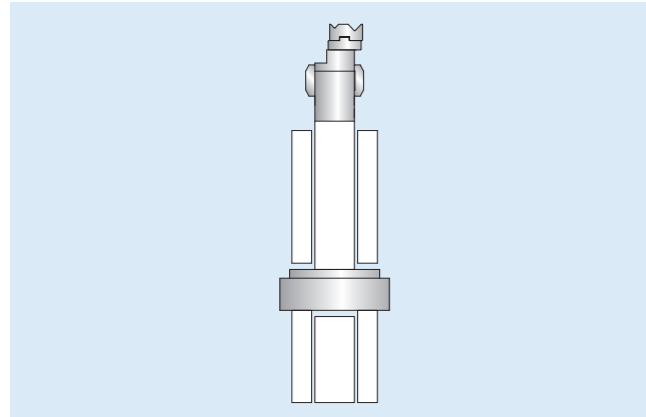
High Speed CNC Press Brake

- High frequency response hydraulic control technology, fast speed, high efficiency, stable precision
- Balance valve control technology, overflow reduced, low oil temperature, more stable and reliable for machine
- More outstanding parameters and configuration, more powerful functions, easier operation
- There is option that worktable can be equipped with dynamic hydraulic compensation function, closed loop control, higher precision and good stability

Multiple Configurations Flexible Combinations

Outstanding Parameters Extraordinary Performance

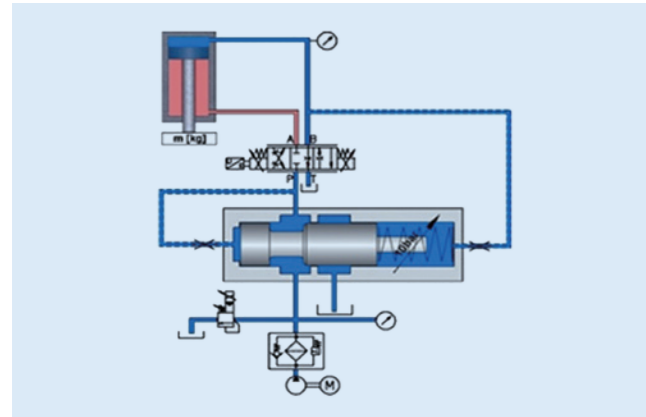
Crowning Compensation



Hydraulic Crowning Compensation Technology (Standard)

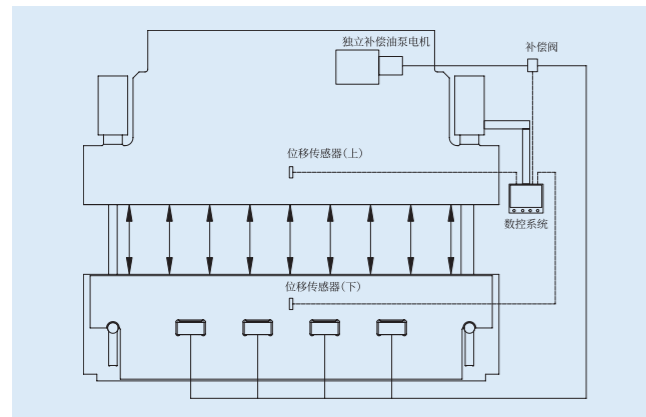
- Hydraulic crowning compensation is composed of a set of oil cylinders under worktable, which can make worktable move relatively and form an ideal convex curve to ensure that the relative position to ram remains no change after bearing force. Compensation amount is automatically calculated by CNC control system according to thickness of sheet metal, die opening and material characteristics

Balance Control



Differential Pressure Balance Control Technology (Standard)

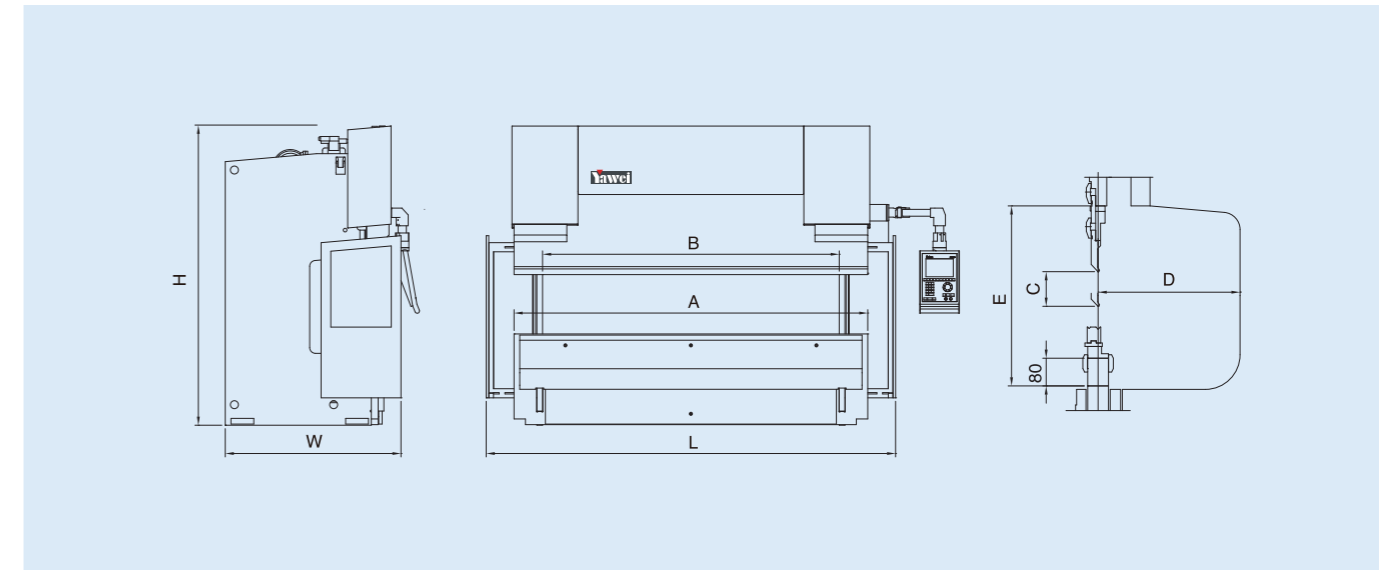
- The differential pressure balance system is used to control the overflow of the hydraulic system in advance and effectively control the temperature rise of the hydraulic system, which is conducive to the long-term stability of the machine



Dynamic Compensation Control Technology (Option)

- Sensor will feedback the actual deformation of ram and worktable to the CNC system, and then CNC system controls the compensation valve, pressurizing the compensation cylinder to move to the specified position, complete closed-loop control, higher precision, and better consistency

Technical Parameters



Model	Bending force	Bending length A	Distance between uprights B	Throat depth D	Ram stroke C	Die setting height E	Ram speed			Main motor power	Oil tank volume	Overall dimension LxWxH		
	kN	mm	mm	mm	mm	mm	mm/s			kW	L	mm		
PBH-80/2550	800	2550	2150	350	175	480	190	17	190	8.5	200	3140	1540	2450
PBH-110/3100	1100	3100	2600	410	215	520	210	17	190	12.4	200	3610	1550	2620
PBH-110/4100		4100	3600	410	215	520	210	17	170	12.4	300	4610	1550	2670
PBH-160/3100	1600	3100	2600	410	215	520	170	14	170	17.8	300	3630	1600	2670
PBH-160/4100		4100	3600	410	215	520	170	14	160	17.8	400	4630	1600	2720
PBH-220/3100	2200	3100	2600	410	215	530	150	13	150	21.4	300	3650	1850	2735
PBH-220/4100		4100	3600	410	215	530	150	13	150	21.4	400	4650	1850	2935
PBH-250/3100	2500	3100	2600	410	215	530	120	12	130	21.4	300	3650	1850	2735
PBH-250/4100		4100	3600	410	215	530	120	12	130	21.4	400	4650	1850	2935
PBH-300/3100	3000	3100	2600	410	265	580	110	10	110	22	450	3700	1900	3000
PBH-300/4100		4100	3600	410	265	580	110	10	110	22	600	4700	1900	3100